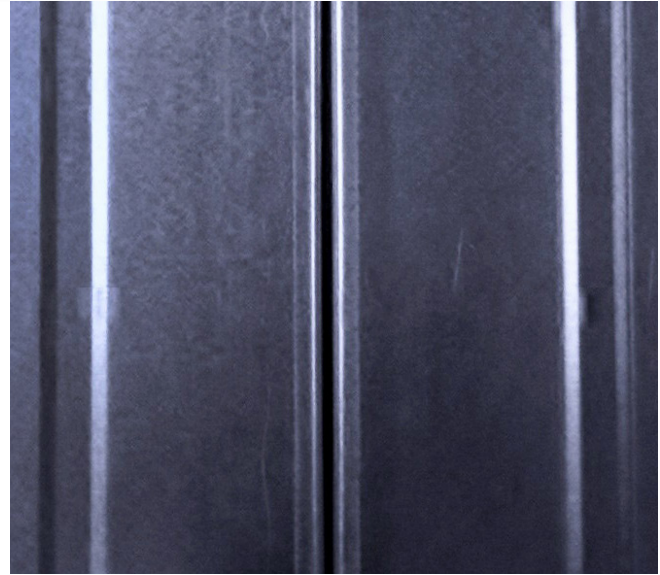




DuraTherm intake plenum.



The joint between two DuraTherm panels.

DuraTherm

Thermal Panel System for Plenums

DuraTherm panels are a cost effective and easy to install solution for thermal walls and plenums.

DuraTherm thermal panels are built around a steel faced composite panel with a non combustible high density mineral fibre core and are available in 2.5", 3", 4" and 5" thick panels. They are ideal for interior air moving plenums and panel systems. The DuraTherm panels offer exceptional spanning characteristics and can be installed horizontally or vertically, virtually eliminating the need for secondary steelwork, helping save time and money during installation.

DuraTherm panels use a simple tongue-and-groove connection, making for a quick and easy installation. The DuraTherm panels eliminate thermal bridging and can be easily removed and re-installed if required.

The DuraTherm thermal panel system is a simple, cost-effective alternative to field-fabricated thermal walls or plenum assemblies. Easy to cut and install, it is a low cost solution that can help reduce labor time and overall project costs.

Thickness Comparison

DuraTherm Thickness	2.5"	63mm	3"	75mm	4"	100mm	5"	125mm
R-Value	R-12		R-14		R-18		R-22	
Weight	2.9 lb/ft ²	14.1 kg/m ²	3.2 lb/ft ²	15.6 kg/m ²	4.3 lb/ft ²	21 kg/m ²	5.3 lb/ft ²	25.8 kg/m ²
Panel Size, Width	46" (1.15m)							
Maximum Span	18 ft	5.5 m	20 ft	6.1 m	22 ft	6.7 m	22 ft	6.7 m
Steel External Face	0.020"	0.5mm	0.020"	0.5mm	0.020"	0.5mm	0.020"	0.5mm
Steel Internal Face	0.020"	0.5mm	0.020"	0.5mm	0.020"	0.5mm	0.020"	0.5mm

Please visit our website at www.durasystems.com or contact DuraSystems for further information at info@durasystems.com