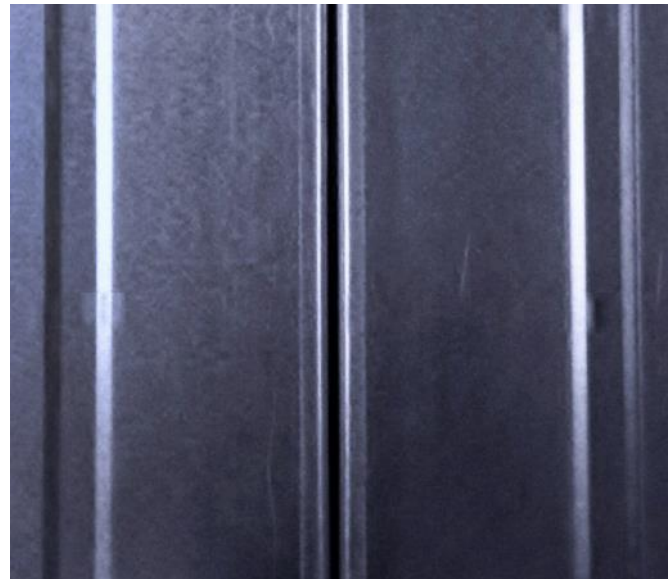




DuraTherm™ intake plenum.



DuraTherm™ panel joint.

DuraTherm™ Thermal Panel System for Plenums

DuraTherm™ panels are a cost effective and easy to install solution for thermal walls and plenums.

The DuraTherm™ thermal panels are built around a steel faced composite panel with a non combustible high density mineral fibre core and are available in 2.5", 3", 4" and 5" thick panels. They are ideal for interior air moving plenums and panel systems. The DuraTherm panels offer exceptional spanning characteristics and can be installed horizontally or vertically, virtually eliminating the need for secondary steelwork, helping save time and money during installation.

DuraTherm panels use a simple tongue-and-groove connection, making for a quick and easy installation. The DuraTherm panels eliminate thermal bridging and can be easily removed and re-installed if required.

The DuraTherm™ thermal panel system is a simple, cost-effective alternative to field-fabricated thermal walls or plenum assemblies. Easy to cut and install, it is a low cost solution that can help reduce labor time and overall project costs.

Thickness Comparison

DuraTherm™ Thickness	2.5"	63mm	3"	75mm	4"	100mm	5"	125mm
R-Value	R-12		R-14		R-18		R-22	
Weight	2.9 lb/ft ²	14.1 kg/m ²	3.2 lb/ft ²	15.6 kg/m ²	4.3 lb/ft ²	21 kg/m ²	5.3 lb/ft ²	25.8 kg/m ²
Panel Size, Width	46" (1.15m)							
Maximum Span	2.9 lb/ft ²	14.1 kg/m ²	20 ft	6.1 m	22 ft	6.7 m	22 ft	6.7m
Steel External Face	0.020"	0.5mm	0.020"	0.5mm	0.020"	0.5mm	0.020"	0.5mm
Steel Internal Face	0.020"	0.5mm	0.020"	0.5mm	0.020"	0.5mm	0.020"	0.5mm

Please visit our website at www.durasystems.com or contact DuraSystems for further information at info@durasystems.com.

DuraSystems 199 Courtland Avenue, Vaughan, Ontario L4K 4T2

Tel: (905) 660-4455 Toll Free: 1-866-338-0988 Fax: (905) 660-8887 www.durasystems.com